



**“J” Fest 1 2021**  
**NOTICE OF RACE**  
**January 22, 23, 24, 2021**  
**Hosted by St. Petersburg Yacht Club**  
**St. Petersburg, Florida**  
**Organizing Authority – St. Petersburg Yacht Club**  
**Website - [www.spyc.org](http://www.spyc.org)**

**Amended December 18<sup>th</sup> 2020 in Red**

**1. RULES**

The regatta shall be governed by the rules as defined by the current *Racing Rules of Sailing* and the Class Rules for ALL J/Classes entered. Only the US Sailing Prescriptions to RRS 40, 67, and 76.1 and added Rules 61.4 and 82 shall apply.

- 1.1 RRS 63.7 shall be replaced by – “If there is a conflict between the Notice of Race (NOR) and the Sailing Instructions (SIs), the Sailing Instructions shall apply.” This changes RRS 63.7
- 1.2 The Equipment Rules of Sailing shall apply.
- 1.3 The Jury may impose suitable penalties, other than Disqualification, for violations of the Class Rules, or other RRS Part 2 rules. This changes RRS 64.1.

**2. ADVERTISING**

- 2.1. Boats may be required to display advertising chosen and supplied by the Organizing Authority (OA), in accordance with RRS 80 and World Sailing Regulation 20.

**3. ELIGIBILITY AND ENTRY**

- 3.1 The regatta is open to all boats of the J/Classes that conform to the Class Rules. A minimum of 5 Entries will constitute a class. If less than 5 entries, these entries will be sailed as a PHRF class.
- 3.2 Eligible boats may enter by completing the online entry form and paying the required fees.
- 3.3 The entry deadline is 2300 19 January 2021. Entries will not be accepted after the entry deadline.
- 3.4 A maximum of 55 boats will be accepted as confirmed entries based on the order in which their entry form and required fees are received. Additional entries will be put on a waiting list in the order in which they are received.
  - 3.4.1 **The J/70 Class Only, will be limited to the first 45 boats. Of that 45, those requiring “launching and retrieving” at St. Peter Sailing Center will be limited to 25 vessels and the remaining 20 will be “dockage only”. Once limits have been met, we will maintain a waiting list in the order of the date and time received. When there is an opening, you will be notified that you have been moved to active.**

NOTE: To be able to identify the vessels who are “dockage only”, or need “launching and retrieving”, you must use the sail number box on your entry and put the letter D before your sail number for “dockage only” or SC before your Sail Number for “launching and retrieving”. Plus, answer the question at the bottom of your entry form.

- 3.5 Boats that have entered and withdraw, in writing prior to 2300 7 January 2021, will receive a refund of their entry fee less a \$25 processing fee. Boats withdrawing after 2300 7 January 2021 will receive a refund less a \$200 processing fee.
- 3.6 Boats that are on the waiting list will be notified that their entry has been accepted as space becomes available. If their entry cannot be accepted, their entry fee will be refunded in full.
- 3.7 To complete the advanced registration process, the following is required information that must be entered online via the regatta website:
- The crew list with valid World Sailing Sailor ID and World Sailing Classification for drivers and all crew for J/Classes entered.
  - Insurance information per NOR 18.
- 3.8 **No boats entry will be final without a completed and signed online [YS] waiver from each participating crew member. If there is a crew member substitution, that crew member must complete and sign an online [YS] waiver. The skipper shall inform the OA &/or PRO of same prior to the first warning that day.**
- 3.9 **No boat will be scored without completing all entry requirements**

#### 4 CLASSIFICATION (deleted)

#### 5 FEES

5.1 The entry fee shall be:

- US **\$225** – Boats up to 27 feet and entries received, and fees paid before 2300 7 January 2021.
- US **\$275** – Boats from 28 feet to 35 feet and entries received, and fees paid before 2300 7 January 2021.
- US **\$375** – Boats over 35 feet and entries received, and fees paid before 2300 7 January 2021.
- Add **\$100 Late Fee** for entries received and fees paid **after** 2300 7 January and **before** 2300 19 January 2021. All prices are inclusive.
- Entries after 19 January 2021 MAY Be accepted solely at the discretion of the organizing authority with an explanation of why and paid an additional non-refundable late fee of \$100.00.

5.2 The entry fee includes:

- **There will be no social events. In the event that the Covid Regulations change, we will notify you.**
- In water dockage from start of registration until the end of the regatta (See NOR 15 &16)
- Three regatta race days
- Awards and prizes

#### 6 SCHEDULE

**All Off the Water Activities may change due to the Covid 19 Restrictions**

Thurs 21 January	1500-1730 1800	<b>Registration will be electronically on line. If in-person is needed, you will be notified. Competitors Meeting if needed will be done electronically.</b>
Fri 22 January	1000	Racing – First Signal
Sat 23 January	1000	Racing – First Signal
Sun 24 January	1000 1400 Between 1400 & 1700	Racing – First Signal No warning signal after this time <b>Awards TBD</b>

#### 7. SAILING INSTRUCTIONS

- **Sailing Instructions will be available online.**

## **8. VENUE**

Attachment A1 shows the location of St. Petersburg Yacht Club and the racing area in Tampa Bay.

## **9. THE COURSES**

The courses to be sailed will be a windward / leeward configuration and **may have** a distance course as described in the Sailing Instructions.

## **10. PENALTY SYSTEM**

**10.1** Unless the course is shortened to finish at the windward mark, penalties while in the zone of the windward mark or on the offset leg may be delayed and taken as soon as possible on the downwind leg. This changes RRS 44.2.

## **11. SCORING**

**11.1** Scoring will be in accordance with RRS 90.3 and Appendix A2.

**11.2** When five or more races have been completed a boat's series score will be the total of her race scores excluding her worst score.

**11.3** Three (3) completed races during the series are required to constitute a Regatta.

## **12. SUPPORT BOATS**

**12.1** The Sailing Instructions may limit the activities of support boats.

**12.2** Support boats and operators shall register with the OA during check in.

**12.3** While on the water support boats shall display prominently the flag issued by the OA.

## **13. BERTHING**

**13.1** Boats shall be kept in their assigned places as directed by the OA and RC when either afloat or ashore.

**13.2** The use of dehumidifiers is prohibited.

## **14. HAUL OUT RESTRICTIONS**

**14.1** All boats shall be afloat by 1800 Thursday 21 January 2021.

**14.2** Boats shall not be hauled out and rudders shall remain in the water in their normal position until after a boat finishes their regatta, except with and according to the terms of prior written permission of the Race Committee.

## **15. COMMUNICATION**

**15.1** Except in an emergency, a boat shall neither make radio transmissions while racing nor receive radio communication not available to all boats. This restriction also applies to mobile phones and any other device capable of sending and receiving any type of communication with the exception of GPS devices.

**15.2** The Official Bulletin will be Yacht Scoring. All competitors shall have a way to access Y.S. to receive all communications posted.

**15.3** The Race Committee may use RRS 90.2[C] to make changes to NOR and /or SI's on the water.

**15.4** The Race Committee will endeavor to hail each yacht that is OCS on the VHF radio. The timing of such hail, the sequence of the hails, the failure to make the hails, or for the competitor to hear such an announcement shall not be grounds for granting redress. This changes RRS 62.1(a).

## **16. PRIZES**

**16.1** Prizes will be given to the top three finishers overall and the **first-place finisher** in the Corinthian Division (see NOR 4.2)

**16.2** Additional prizes may be awarded at the discretion of the OA.

## 17 DISCLAIMERS OF LIABILITY, WAIVERS, AND PERSONAL CONDUCT

17.1 Competitors participate in the regatta entirely at their own risk. See RRS 3, Decision to Race.

17.2 The Organizing Authority will not accept any liability for material damage or personal injury or death sustained in conjunction with or prior to, during, or after the regatta. Each person racing on board a boat entered in the regatta shall sign a waiver and release of liability at or before on-site registration and check-in. The St. Petersburg Yacht Club, the J Class Association and their members, volunteers, employees, officers and agents shall not be responsible for any loss, damage or the participation of any boat.

17.3 Skippers' waivers resubmitted with the on-line entry form. Crew waivers are submitted on-line at: [www.spyc.org](http://www.spyc.org) then link to Yacht Scoring site.

17.4 A link to the crew waivers is also available on St. Petersburg Yacht Club website at [www.spyc.org](http://www.spyc.org). This will link you to Yacht Scoring site.

17.5 It is the skipper's obligation to ensure that each crew member's waiver is reflected on the waiver list prior to closing of on-site registration and check-in.

17.6 The Skipper/Owner of each boat participating in the Regatta shall be responsible for the behavior of each member of the crew of his/her boat both on the water and while ashore. The failure of any of those persons to comply with all federal, state, and local government regulations as well as the St Petersburg Yacht Club policies or with any reasonable request of the Organizing Authority, Race Officers, or their representatives may result in the disqualification of the boat and its exclusion from the regatta.

This modifies RRS 76.

## 18 INSURANCE

Each participating boat shall be insured with a valid third-party liability insurance with a minimum coverage of US \$300,000 per event or the equivalent. A copy of insurance company documents establishing such coverage is current through the end of the regatta shall be supplied as part of completing check in.

### Further Information:

**A. Due to the uncertainty of these times with health regulations, there may be some changes to the Notice of Race and the Schedule as to locations and procedures.**

### B. Storage and Launching

1. Contact the Sailor's Wharf, Inc. [jopie@sailorswharf.com](mailto:jopie@sailorswharf.com) website [www.sailorswharf.com](http://www.sailorswharf.com), phone 727-823-1155 Ext 206.

### C. Vessel transportation:

1. Those who want to have their J/Boat transported, please contact Joule Yacht Transportation's Matt Jensen at 800-237-0727 Ext 116, [mjensen@jouleyacht.com](mailto:mjensen@jouleyacht.com)

### D. Guest Cards

1. SPYC requests that everyone who does not have reciprocity get a Guest Card using a Visa or MasterCard credit card. This can be done online ([www.spyc.org](http://www.spyc.org)). On the Home page click on the menu item "Regattas", then Guest Card". Fill out the information and click "Submit".
2. The Club requests you and your crew members to submit this form at least 48 hours in advance of the event.
3. Everyone may pick up their cards at the Front Desk at SPYC upon arrival.
4. **Extra Social Event Tickets can be purchased.**

### E. Hotel-Motel Accommodations near SPYC:

1. Go to the SPYC website at [www.spyc.org](http://www.spyc.org).
2. Click on Regattas, then click on Local Accommodations

**E. Contacts for this event are:** George Pennington Cell 727-580-5431 Email [epennin09@earthlink.net](mailto:epennin09@earthlink.net)

[See Attachment A1 below](#)



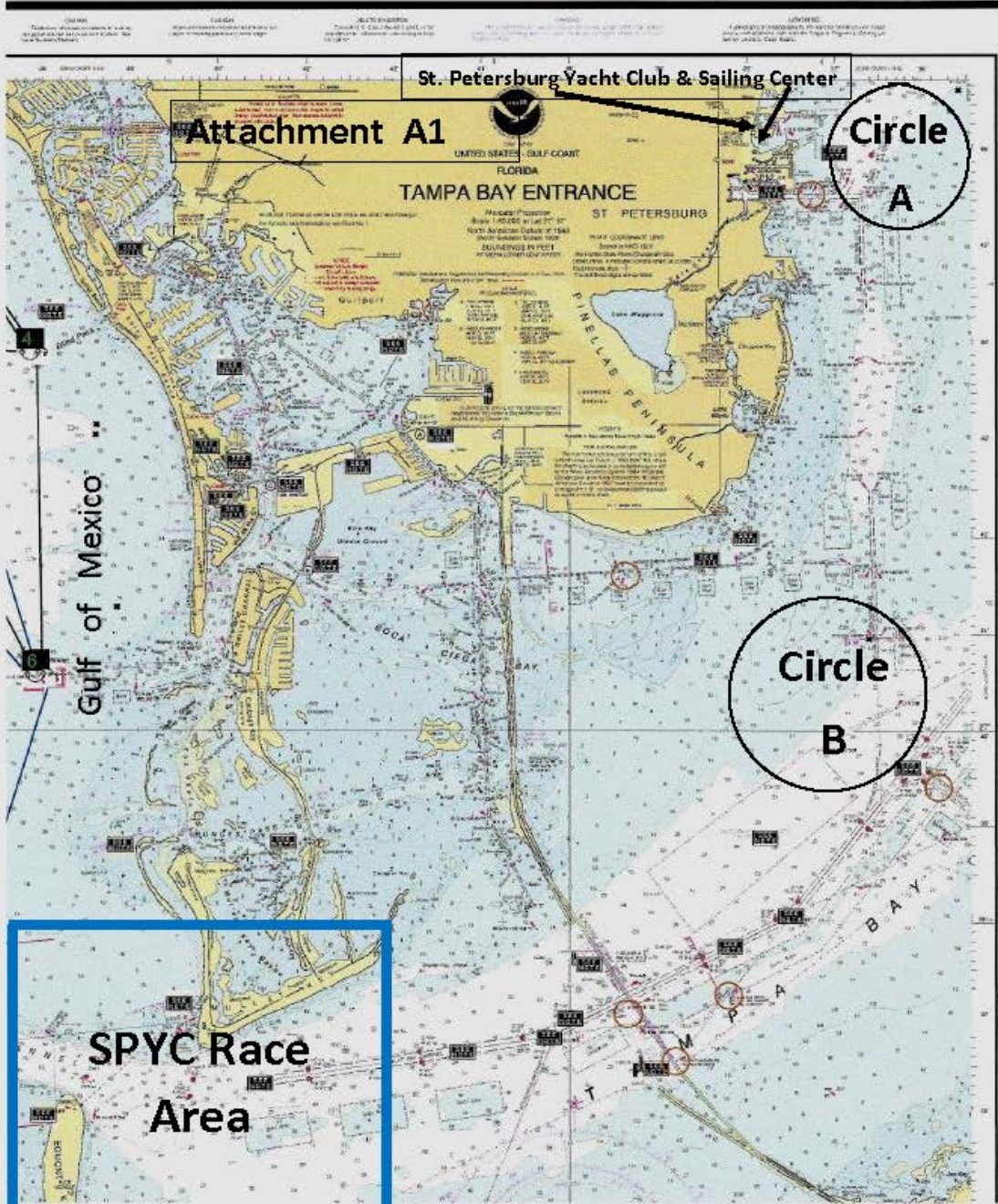


Chart Name: TAMPA BAY ENTRANCE  
 Chart ID: 11415 1  
 Top Left: 27° 47' 34" N 82° 46' 24" W  
 Bottom Right: 27° 35' 4" N 82° 34' 59" W

These Areas are the approximate locations of the Sailing Area  
 Not be used for Navigation

© MAPTECH, INC.